

SHORT COMMUNICATION

A. L. Ozerov. *SCATHOPHAGA HELENAE* (THOMSON, 1869), A NEW SYNONYM OF *SCATHOPHAGA SOROR* (WIEDEMANN, 1818) (DIPTERA: SCATHOPHAGIDAE). – Far Eastern Entomologist. 2012. N 247: 14-16.

Summary. *Scathophaga helenae* (Thomson, 1869) is a new junior synonym of *Scathophaga soror* (Wiedemann, 1818).

Key words: Diptera, Scathophagidae, *Scathophaga*, new synonym, Afrotropical region.

А. Л. Озеров. *Scathophaga helenae* (Thomson, 1869) – новый синоним *Scathophaga soror* (Wiedemann, 1818) (Diptera: Scathophagidae) // Дальневосточный энтомолог. 2012. N 247. С. 14-16.

Резюме. Установлено, что *Scathophaga helenae* (Thomson, 1869) является младшим синонимом *Scathophaga soror* (Wiedemann, 1818).

INTRODUCTION

The family Scathophagidae in the Afrotropical region was reviewed by Ozerov whilst preparing a chapter on the Scathophagidae for the forthcoming Manual of Afrotropical Diptera (Ozerov, 2010). Five species in the genus *Scathophaga* Meigen, 1803 were recorded and a key to the species was provided. However, the status of *Scathophaga helenae* (Thomson, 1869) is in need of clarification. The purpose of this paper is the solution of this question.

S. helenae was described from both sexes, number not stated; all specimens from St. Helena Island. There are five syntypes in Naturhistoriska Riksmuseet, Stockholm, Sweden (NHRS), 2 males and 3 females. These syntypes were studied in 1954 by Dr. J.R. Vockeroth, and he designated lectotype, but this designation was not published.

Due to the help of Dr. Yngve Brodin (NHRS) I got all necessary information about these syntypes, including photos of one of males, which I designate below as lectotype of *S. helenae*. The second male was sent to me by post, its genitalia were studied.

TAXONOMY

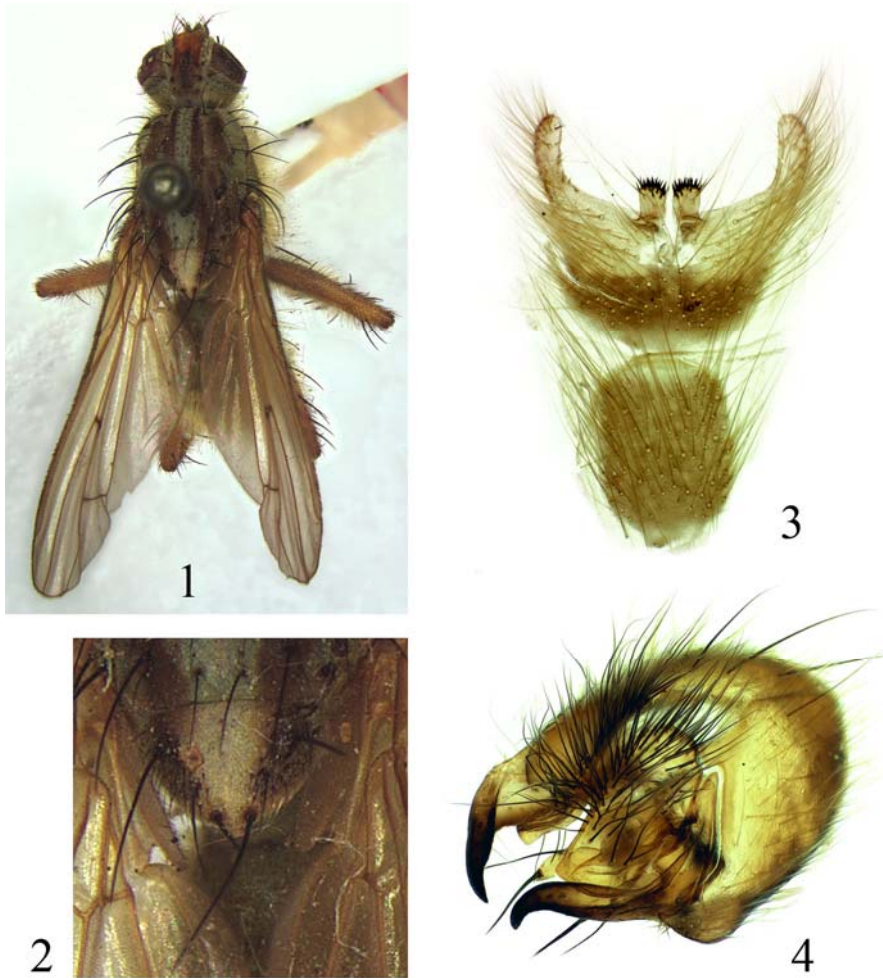
***Scathophaga soror* (Wiedemann, 1818)**

Scatophaga soror Wiedemann, 1818: 46.

Scatophaga helenae Thomson, 1869: 562. (Lectotype – ♂, St. Helena Island, in NHRS, by present designation [examined on photos]); **syn. n.**

NOTES. Male syntype which I has labelled and designate herewith as lectotype of *Scatophaga helenae* was studied by me on photos (Fig. 1). This specimen is pinned, in very good condition. When enlarged it demonstrated scutellum with 3 pairs of strong setae and well developed prescutellar acrostical setae (Fig. 2). According to the information given by Y. Brodin, this specimen with number No NHRS-BYWS000000651 has the following labels: (1) St. Helena, (2) Kinb., (3) Typus, (4) *Scatophaga helenae* lectotype designated by J.R. Vockeroth 19, (5) *Scatophaga helenae* Thoms.

The second male syntype was sent to me by post for the examination of genitalia; it has been labelled as paralectotype. This male labelled (1) St. Helena., (2) Kinb., (3) *Scatophaga helenae* Thoms. Paralectotype labelled 1954 by J.R. Vockeroth, (4) NHRS-BYWS 000000608. It is pinned, but is not in good condition as lectotype (see above): scutellum and right wing almost completely destroyed, legs are deformed; abdomen cut and kept in plastic tube with glycerol on separate pin. This pin with tube has a label with the same number ["NHRS-BYWS 000000608"] as the pin with the specimen.



Figs 1–4. *Scatophaga helenae* Thomson, 1869, male. 1, 2 – lectotype (photo by Y. Brodin); 3, 4 –paralectotype: 1 – adult, dorsal view; 2 – scutellum; 3 – sternites 4 (below) and 5 (above); 4 – epandrium and surstyli.

According to information, given by Y. Brodin, all the remaining syntypes of *S. helenae* (NHRS-BYWS00000607, 609 and 610) are females and labeled "St. Helena" and labelled as paralectotypes by J.R. Vockerot in 1954, lack the label "Kinb."; all not studied by me, but formally have been labelled as paralectotypes.

Examination of the scutellum (Fig. 2), male sternites 4 and 5 (Fig. 3) and male genitalia (Fig. 4) revealed unambiguously that this species is specifically identical with *Scathophaga soror* (Wiedemann, 1818) (see Ozerov, 2010). Accordingly I herewith synonymise *helenae* with *Scathophaga soror* (Wiedemann, 1818), **syn. n.**

ACKNOWLEDGEMENTS

It is pleasure to thank Dr. Yngve Brodin, the curator of Diptera in the Naturhistoriska Riksmuseet, Stockholm, Sweden, for information, photos and loan of the type material of *Scathophaga helenae*.

REFERENCES

- Ozerov, A.L. 2010(2009). Review of Afrotropical Scathophagidae (Diptera). *Russian Entomological Journal*, 18(4): 299–308.
- Thomson, C.G. 1869. 6. Diptera. Species nova descripsit. P. 443–614. *Kongliga svenska fregatten Eugenie's resa omkring jorden*. Stockholm. Pt. 2: Zoologie. 1. 617 p.
- Wiedemann, C.R.W. 1818. Neue Insecten vom Vorgebirge der guten Hoffnung. (*Wiedemann's Zoologische Magazin*, 1(2): 40–48.

Author's address:

Zoological Museum,
Moscow Lomonosov State University,
Bol'shaya Nikitskaya 6,
Moscow 125009, Russia.
E-mail: ozerov2455@rambler.ru

© **Far Eastern entomologist (Far East. entomol.)** Journal published since October 1994.
Editor-in-Chief: S.Yu. Storozhenko
Editorial Board: A.S. Lelej, N.V. Kurzenko, M.G. Ponomarenko, E.A. Beljaev, V.A. Mutin,
E.A. Makarchenko, T.M. Tiunova, P.G. Nemkov, M.Yu. Proshchalykin, S.A. Shabalin
Address: Institute of Biology and Soil Science, Far East Branch of Russian Academy of
Sciences, 690022, Vladivostok-22, Russia.
E-mail: entomol@ibss.dvo.ru web-site: <http://www.biosoil.ru/fee>