

Far Eastern Entomologist

Дальневосточный энтомолог

Journal published by Far East Branch
of the Russian Entomological Society
and Laboratory of Entomology,
Institute of Biology and Soil Sciences,
Vladivostok

Number 184: 1-4

ISSN 1026-051X

April 2008

TWO NEW SPECIES OF THE GENUS *NORELLIA* ROBINEAU- DESVOIDY, 1830 (DIPTERA, SCATHOPHAGIDAE) FROM ALTAI

A. L. Ozerov

Zoological Museum, Moscow Lomonosov State University, Bol'shaya Nikitskaya 6,
Moscow 125009, Russia. E-mail: ozerov2455@rambler.ru

Two new species *Norellia altaica* sp. n. and *N. yolduensis* sp. n. (Diptera, Scathophagidae) are described from Altai.

KEY WORDS: Diptera, Scathophagidae, new species, Russia.

А.Л. Озеров. Два новых вида рода *Norellia* Robineau-Desvoidy, 1830 (Diptera, Scathophagidae) с Алтая // Дальневосточный энтомолог. 2008. N 184. С. 1-4.

С Алтая описаны два новых вида: *Norellia altaica* sp. n. и *N. yolduensis* sp. n. (Diptera, Scathophagidae).

Зоологический музей, Московский государственный университет им. М.В. Ломоносова, Большая Никитская ул., 6, Москва, 125009, Россия.

INTRODUCTION

Among the material from Altai sent to me for determination by Dr A. Barkalov (Novosibirsk) two new species of the genus *Norellia* (Diptera, Scathophagidae) were found. The descriptions of these species are given below. Holotypes of the new species are deposited in the collection of Siberian Zoological Museum, Institute for Systematics and Ecology of Animals (ISEA), Siberian Branch of the Russian Academy of Sciences, Novosibirsk, Russia.

DESCRIPTIONS OF SPECIES

Norellia altaica Ozerov, sp. n.

Figs 1-3

MATERIAL. Holotype – ♂, Russia: Altaiskii krai, 45 km E Ust'-Ulagan, the upper reaches of the Yoldu River, 50.5° N, 88.57° E, 2020 m, 17.VI 2005 (coll. V. Sorokina).

DESCRIPTION. MALE. Frons yellow, matt, with whitish pollen along eyes. Ocellar triangle blackish. Face and gena yellowish with whitish pollen. Postcranium with greyish pollen, blackish in upper part and whitish in lower third. 4 *or*, 1 *oc*, 1 *poc*, 1 *ivt*, 1 *ovt*; all setae black and strong, except yellow and thin *poc*. One pair of yellow vibrissae, which are situated approximately at the level of the lower margin of eye. Antenna completely yellow. Postpedicel roundish apically, approximately 2.0 times as long as wide. Arista black, short haired, the length of hairs is about the width of basal diameter of arista. Clypeus and palpi yellow.

Thorax greyish pruinose, black, only proepisternum yellow in lower part. Scutum with the following paired setae (all setae black): 1 *pprn*, 1 *npl*, 1+2 *spal*, 2 *pal*, 1+2(?) *dc*. Proepisternum with short hairs and with 1 yellow seta near lower margin. Anepisternum with short hairs in posterior half and with 1 black seta near posterior margin. Katepisternum with 1 strong yellow seta in upper posterior corner. Scutellum with 2 strong setae.

Coxa of foreleg completely yellow; coxae of midleg and hindleg partly darkened in upper part. Femora, tibiae and tarsi of all legs completely yellow, with yellow hairs and yellow and black setae. Femur of foreleg with row of 9–11 long and strong *pv*, with row of 7–8 short *av*, and row of 5–7 *d*; *pv* in apical half black and yellow in basal half. Tibia of foreleg with 4 black *pv*, 6–7 yellow *av*, 1 black *pd* in apical third, 2 yellowish-black *ad*. Femur of midleg with row of 5–6 *a*, 1 apical *p*, with erect and thin yellow hairs posteroventrally. Tibia of midleg with 1 *pd* in basal third, with numerous long and thin yellow hairs ventrally, with apical *av* and *pv*. Femur of hindleg with row of 5–6 *ad*, 0–1 *a* near tip, with erect yellow hairs posteroventrally. Tibia of hindleg with 2 *ad*, 2 *pd*, with 1 preapical *d* and 1 apical *av*.

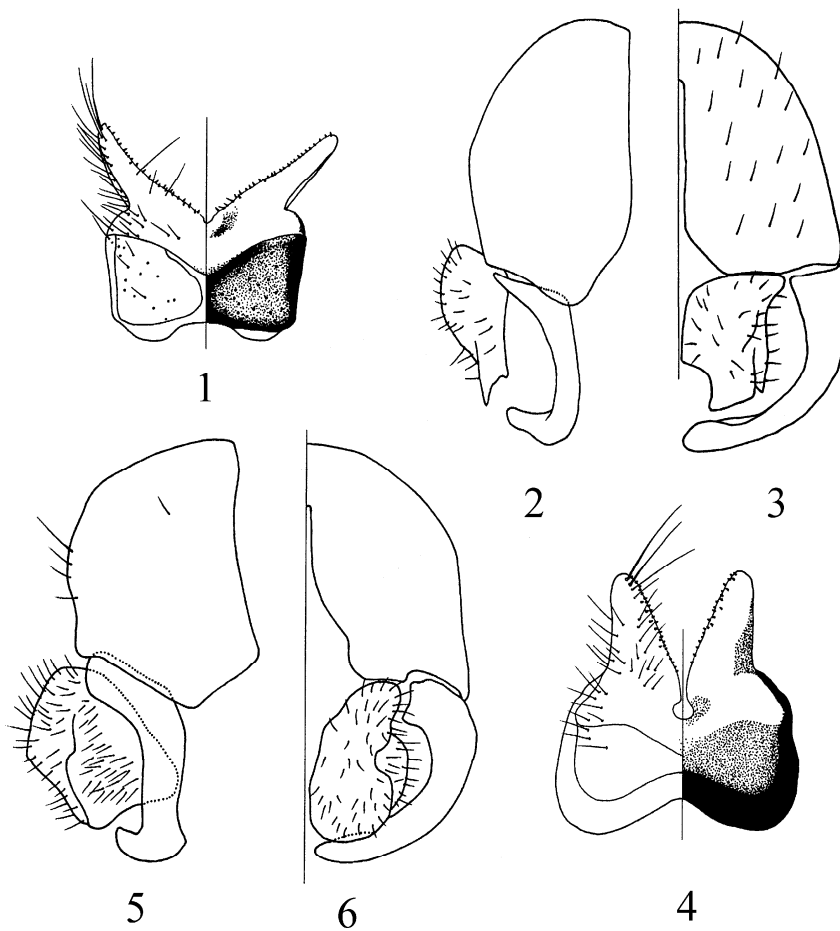
Wing tinged with yellowish; veins brown. Calypters and their margins white. Halter yellowish.

Abdomen black with greyish pollen, with yellow hairs and thin blackish setae along posterior margin of each tergite. Processes of sternite 5 strong divergent (Fig. 1). Epandrium yellowish; cerci and surstyli as in Figs 2, 3.

FEMALE unknown.

MEASUREMENTS. Length of body 4.9 mm. Length of wing 4.6 mm.

DIAGNOSIS. New species is closely related to *Norellia japonica* (Hironaga et Suwa, 2005) from Japan (Hironaga & Suwa, 2005) in having the similar type of male sternite 5, but distinguishes from the latter by completely black scutum, by presence of yellow setae on fore femur, by only one pair of presutural dorsocentral setae and by other structure of male cerci.



Figs 1-6. *Norellia altaica*, sp. n. (1-3) and *Norellia yolduensis*, sp. n. (4-6): 1, 4 – sternite 5 of male; 2, 5 – epandrium and surstyli, lateral view; 3, 6 – the same, dorsal view.

***Norellia yolduensis* Ozerov, sp. n.**

Figs 4-6

MATERIAL. Holotype – ♂, Russia: Altaiskii krai, 45 km E Ust'-Ulagan, the upper reaches of the Yoldu River, 50.5° N, 88.57° E, 2020 m, 19.VI 2005 (coll. V. Sorokina).

DESCRIPTION. MALE. Frons reddish-yellow, matt, with whitish pollen along eyes. Ocellar triangle blackish. Face and gena yellowish with whitish pollen. Post-cranium with greyish pollen, blackish in centre, brownish along eyes and yellow in

lower third. 4 *or*, 1 *oc*, 1 *poc* (approximately 2.0 times thin and short *ovt*), 1 *ivt*, 1 *ovt*; all setae black. One pair of black vibrissae, which are situated approximately at the level of the lower margin of eye. Antenna yellow, darkened around base of arista. Postpedicel roundish apically, approximately 2.0 times as long as wide. Arista black, short haired, the length of hairs is about the width of basal diameter of arista. Clypeus and palpi yellow.

Thorax greyish pruinose, black in ground colour. Scutum brown, with black stripe between *dc*. Postpronotum, proepisternum and anepisternum in anterior part brown. Scutum with the following paired setae (all setae black): 1 *pprn*, 2 *npl* (posterior shorter than anterior), 1+2 *spal*, 2 *pal*, 2+3 *dc*. Proepisternum with short hairs and with 1 black seta near lower margin. Anepisternum with short hairs in posterior half and with 1 black seta near posterior margin. Katepisternum with 1 strong black seta in upper posterior corner. Scutellum with 2 strong setae.

Legs yellow in ground colour, with yellow and black hairs and black setae; coxae of midleg and hindleg partly darkened; femora of midleg and hindleg near apex with blackish spot. Femur of foreleg with row of 9–10 long and strong *pv*, with row of 7–8 short *av*, and row of 5–6 thin *d*. Tibia of foreleg with 4 *pv*, 4–5 *av*, 1 *pd* in apical third, 3 *d*. Femur of midleg with row of 5–6 *a*, 1 apical *p*, 2 *av* in apical quarter, with erect and thin yellow hairs posteroventrally. Tibia of midleg with 1 *ad* in apical half, 1 *pd* near middle, 3 thin *p*, with apicals *av*, *v* and *pv*. Femur of hindleg with row of 5–6 *ad*, 3 *av* in apical third, 1 *a* near tip, with erect yellow hairs posteroventrally. Tibia of hindleg with 2 *ad*, 2 *pd*, 1 preapical *d*, 1 thin apical *av* in apical third and 1 strong apical *av*.

Wing tinged with yellowish; veins brownish. Calypters yellowish, with more darkened margins. Halter brownish.

Abdomen black with greyish pollen, with black hairs and black setae along posterior margin of each tergite. Sternite 5 as in Fig. 4. Epandrium yellowish; cerci and surstyli as in Figs 5, 6.

FEMALE unknown.

MEASUREMENTS. Length of body 6.6 mm. Length of wing 5.2 mm.

DIAGNOSIS. New species is closely related to *Norellia femoralis* (Loew, 1864) in having the similar type of male sternite 5, but distinguished from the latter by yellow femora (in *N. femoralis* femora black, only fore and mid ones apically brown).

REFERENCES

Hironaga, T. & Suwa, M. 2005. Notes on the genus *Norellisoma* in Japan, with description of a new species (Diptera, Scathophagidae). – *Studia dipterologica* 12(1): 199–208.

© **Far Eastern entomologist (Far East. entomol.)** Journal published since October 1994.

Editor-in-Chief: S.Yu. Storozhenko

Editorial Board: A.S. Lelej, V.S. Sidorenko, N.V. Kurzenko

Address: Institute of Biology and Soil Science, Far East Branch of Russian Academy of Sciences, 690022, Vladivostok-22, Russia.

E-mail: entomol@ibss.dvo.ru

FAX: (4232) 310 193