

<https://doi.org/10.25221/fee.441.3>

<http://zoobank.org/References/F2392800-210F-433C-AD73-E3DD4EB643B6>

FIRST RECORD OF *PSECHRUS HARTMANNI* BAYER, 2012 (ARANEAE: PSECHRIDAE) FROM INDIA

I. V. Ashigha¹⁾, S. Sen^{2,*}, P. M. Sureshan¹⁾

1) Zoological Survey of India, Western Ghat Regional Centre, Jafferkhan Colony, Kozhikode, Kerala – 673 006, India.

2) Zoological Survey of India, Prani Vigyan Bhawan, M-Block, New Alipore, Kolkata – 700053, West Bengal, India. *Corresponding author, E-mail: sensouvik07@gmail.com

Summary. The spider *Psechrus hartmanni* Bayer, 2012 is recorded for the first time from India. The species is redescribed and illustrated based on female specimen collected from Tamil Nadu State of India.

Key words: spiders, lace-sheet weavers, distribution, new record, Tamil Nadu.

И. В. Ашига, С. Сен, П. М. Сурешан. Первое указание *Psechrus hartmanni* Bayer, 2012 (Araneae: Psechridae) из Индии // Дальневосточный энтомолог. 2021. N 441. С. 13-16.

Резюме. Паук *Psechrus hartmanni* Bayer, 2012 впервые отмечается для фауны Индии. Приводится иллюстрированное описание этого вида по самке, собранной в индийском штате Тамил Наду.

INTRODUCTION

The family Psechridae presently includes two genera and 61 species distributed mainly in South East Asia with a single species recorded from Indonesia (Sulawesi) to Australia (Queensland) (WSC, 2021). Five species, namely *Fecenia protensa* Thorell, 1891, *Psechrus crepido* Bayer, 2012, *P. himalayanus* Simon, 1906, *P. inflatus* Bayer, 2012 and *P. torvus* (O. Pickard-Cambridge, 1869), are known from India (Caleb & Sankaran, 2021). A new to the fauna of India species of the genus *Psechrus* Thorell, 1878 is found in the Tamil Nadu State.

MATERIAL AND METHODS

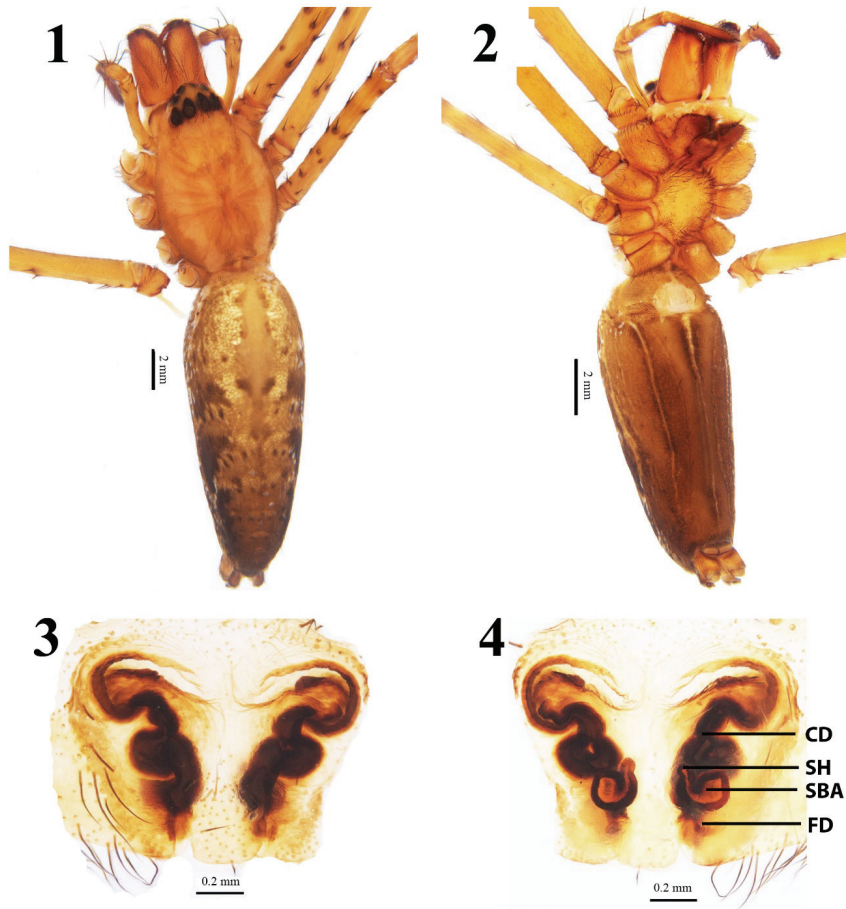
The Psechrid spider specimen was examined under LEICA M205A stereo zoom binocular microscope and images were taken with LEICA DFC 500 digital camera attached to the same. The images were processed using LEICA LAS software (Leica Application Suite V3.8). The final illustrations were post-processed for contrast and brightness using Adobe® Photoshop® software. The dissected female epigyne was cleared in 10% KOH solution. All measurements in the text are in millimeters. Leg measurements are shown as: total length (femur, patella, tibia, metatarsus, tarsus). Leg spination pattern follow those in Bayer and Jäger (2010). Morphology of female epigyne was compared with the illustrations of Bayer (2012).

The abbreviations used in the text and figures are as follows: AME = anterior median eyes, ALE = anterior lateral eyes, PME = posterior median eyes, PLE = posterior lateral eyes, CD = copulatory duct, SH = spermathecal head, SBA = spermathecal base, FD = fertilization duct, WSC = World Spider Catalog. The specimen is deposited in the National Zoological Collections at Zoological Survey of India, Western Ghat Regional Centre, Kozhikode, Kerala, India (Reg. no. ZSI/WGRC/IR.INV/17211).

NEW RECORD

Family Psechridae Simon, 1890

Genus *Psechrus* Thorell, 1878



Figs 1–4. Female of *Psechrus hartmanni* Bayer, 2012: 1 – habitus, dorsal view; 2 – the same, ventral view; 3 – epigyne, ventral view; 4 – epigyne, dorsal view. Scale bars: figs 1, 2 = 2.0 mm, figs 3, 4 = 0.2 mm.

***Psechrus hartmanni* Bayer, 2012**

Figs 1–4

MATERIAL EXAMINED. **India:** Tamil Nadu, Kanyakumari Wildlife Sanctuary, 8°29'33.72"N, 77°22'52.68"E, h=1329 m, 16.II 2020, 1♀, leg. S. Sen.

DIAGNOSIS. Females of *P. hartmanni* Bayer, 2012 is similar to that of *P. torvus* (O. Pickard-Cambridge, 1869) and *P. zygon* Bayer, 2012 but can be distinguished from them by the following combination of characters: first loop of the copulatory duct directed laterally in *P. hartmanni* (first loop of copulatory duct directed anteriorly in *P. torvus*), distal portion of the copulatory duct located lateral to the spermathecal head in *P. hartmanni* (while distal portion of the copulatory duct located medial to the spermathecal head in *P. zygon*).

DESCRIPTION. Female. Body measurements: Carapace length = 6.50, Carapace width = 4.47, Abdominal length = 10.14, Abdominal width 4.36, Total length = 16.80. Cephalothorax yellowish brown, longer than wide, anteriorly narrowed, two distinct median brown longitudinal and two lateral brown bands with serration (Fig. 1); eyes 8, anterior row more recurved than posterior row, AME = 0.33, ALE = 0.43, PME = 0.44, PLE = 0.44, inter ocular distance: AME-AME = 0.27, AME-ALE = 0.30, ALE-ALE = 0.51, PME-PME = 0.25, PLE-AME = 0.32, PLE-PLP = 1.68, ALE-PLP = 0.37, AME-PME = 0.51; clypeus yellowish brown, height 0.9. Chelicera brown, furrow with 3 promarginal and 5 retromarginal teeth and 4 small denticles in between both rows of teeth; maxillae brown, longer than wide, apically scopulate (Fig. 2). Legs yellowish brown, long, with hairs and spines, leg measurements: I 46.0 (13.0, 2.0, 13.0, 12.0, 6.0), II 33.0 (10.0, 2.0, 9.0, 8.0, 4.0), III 23.0 (7.0, 2.0, 5.0, 6.0, 3.0), IV 36.0 (11.0, 2.0, 9.0, 9.0, 5.0), leg formula 1423; leg spination: femur I 555, II 546, III 555, IV 544; patella I-IV 0000; tibia I 3137, II 3038, III 2024, IV 3147; metatarsus I 3036, II 3047, III 3036, IV 3146. Abdomen dorsally yellowish brown with median and lateral dark grey patches (Fig. 1); ventrally greyish brown with a median and 2 lateral longitudinal white lines, spinnerets yellowish brown (Fig. 2).

Epigyne with curved wrinkles anterior to the median plate; copulatory ducts long and larger than spermatheca, first loop of copulatory duct directed laterally, distal part of copulatory duct located lateral to spermathecal head, spermathecal head positioned antero-medial to spermatheca, spermathecal base broad, narrow fertilization duct originated from spermathecal base (Figs 3, 4).

DISTRIBUTION. India (new record), Sri Lanka.

ACKNOWLEDGEMENTS

We are grateful to Dr. Dhriti Banerjee, Director, Zoological Survey of India for her encouragement and providing all necessary facilities to carry out the work. We would like to thank Dr. Steffen Bayer, Germany for his guidance and support extended during this study. We also thank the anonymous reviewers for their constructive comments which improved the manuscript significantly.

REFERENCES

- Bayer, S. 2012. The lace-sheet-weavers- a long story (Araneae: Psechridae: *Psechrus*). *Zootaxa*, 3379: 1–170.
- Bayer, S. & Jäger, P. 2010. Expected species richness in the genus *Psechrus* in Laos (Araneae: Psechridae). *Revue suisse de Zoologie*, 117(1): 57–75.

Caleb, J.T.D. & Sankaran, P.M. 2021. *Araneae of India. Version 2021*. Available at: <http://www.indianspiders.in> (accessed on 30th May 2021).
World Spider Catalog, 2021. World Spider Catalog (version 22.0), Natural History Museum Bern. Available at: <http://wsc.nmbe.ch> (accessed on 30th May 2021).

© **Far Eastern entomologist (Far East. entomol.)** Journal published since October 1994.
Editor-in-Chief: S.Yu. Storozhenko
Editorial Board: A.S. Lelej, S.A. Belokobylskij, M.G. Ponomarenko, V.A. Mutin, E.A. Beljaev, E.A. Makarchenko, A.V. Gorochov, T.M. Tiunova, M.Yu. Proshchalykin, S.A. Shabalin, V.M. Loktionov
Address: Federal Scientific Center of the East Asia Terrestrial Biodiversity (former Institute of Biology and Soil Science), Far East Branch of the Russian Academy of Sciences, 690022, Vladivostok-22, Russia.
E-mail: storozhenko@biosoil.ru web-site: <http://www.biosoil.ru/fee>