

<https://doi.org/10.25221/fee.392.2>

<http://zoobank.org/References/65DD1043-28B8-4AB1-82DF-BDD80EAE5E82>

**TO THE FAUNA OF SPIDERS (ARACHNIDA: ARANEI) OF THE
“LEOPARD LAND” NATIONAL PARK AND THE “KEDROVAYA PAD”
STATE NATURE RESERVE, PRIMORSKII KRAI**

L. A. Trilikauskas

*Institute of Systematics and Ecology of Animals, Russian Academy of Science, Siberian
Branch, Novosibirsk, Russia. E-mail: laimont@mail.ru*

Summary. An annotated list of 77 spider species in 55 genera and 18 families collected in the “Leopard Land” National Park and “Kedrovaya Pad” State Nature Reserve is presented. Fifty-seven species have not been previously observed in these specially protected natural areas. Five species are reported for the Russia for the first time. The female copulatory organs of *Pardosa laevitarsis* Tanaka et Suwa, 1986 and *P. laura* Karsch, 1879 are illustrated as well.

Key words: Araneae, spiders, fauna, new records, habitats, copulatory organ, Russian Far East.

Л. А. Триликаускас. К фауне пауков (Arachnida: Aranei) национального парка «Земля леопарда» и заповедника «Кедровая Падь», Приморский край // Дальневосточный энтомолог. 2019. N 392. С. 6-20.

Резюме. Приведен аннотированный список 77 видов пауков из 55 родов и 18 семейств, собранных на территории национального парка «Земля леопарда» и заповедника «Кедровая Падь». Пятьдесят семь видов ранее не были обнаружены на этих особо охраняемых природных территориях. Пять видов впервые отмечены для России. Проиллюстрированы копулятивные органы самок *Pardosa laevitarsis* Tanaka et Suwa, 1986 и *P. laura* Karsch, 1879.

INTRODUCTION

The spider fauna of the southernmost territories of the Russian Far East is one of the richest regional faunas of Russia. It is unique in that it has common features with the faunas of adjacent southern territories, such as Korea, China and Japan. Many species that occur in Primorskii krai and the southern parts of Khabarovskii krai are unknown from anywhere else in Russia, and their distribution is limited to the Palearcticae Region only. In the Russian Far East, they reach northernmost limits of their distribution. In recent decades, the research interest of arachnologists to this region has increased considerably, and at present its araneofauna seems to be rather well-studied (Prószyński, 1979; Marusik & Logunov, 1991; Eskov & Marusik, 1992, 1994; Mikhailov, 1992; Ovtchinnikov, 1999; Logunov & Marusik, 2000a; Tanasevitch, 2008; Mikhailov, 2013). However, spiders of specially protected natural territories of the southernmost territories of the Russian Far East have rarely been subject of special systematic research (Marusik *et al.*, 2007; Marusik, 2009).

In this paper the information on the fauna of the two southernmost Far Eastern protected areas (“Kedrovaya Pad” Reserve and the “Leopard Land” National Park) based on newly collected materials is given. These territories are adjacent to each other and managed together. These specially protected natural territories are located within the borders of the Khasanskii, Nadezhdinskii and the Ussuriiskii districts. In the literature, so far there are very scattered data on the spiders occurring in the “Kedrovaya Pad” Reserve and “Leopard Land” National Park (Dunin, 1984; Marusik *et al.*, 2015, 2016, 2017; Marusik & Logunov, 2017; etc.). At present, data on the records of 79 species of spiders in these specially protected natural areas have been published in various faunistic and taxonomic works, while only three species were known from the territory of the “Leopard Land” National Park. In a number of works, one can find data on spiders of the Khasanskii, Nadezhdinskii and Ussuriiskii districts of the Primorskii krai (Dunin, 1984; Logunov & Marusik, 2000b; Marusik & Koponen, 2000; Omelko *et al.*, 2011; etc.) however, in the whole region remains poorly studied.

MATERIAL AND METHODS

The studied material was collected in August–September 2018. On the territory of the “Leopard Land” National Park, fieldworks were carried out in the valleys of Barabashevka River (43°10'N, 131°29'E), Gryaznaya River (43°21'N, 131°33'E) and Ananyevka River (43°22'N, 131°32'E). On the territory of the “Kedrovaya Pad” Reserve, the material was collected from the vicinity of the old reserve’s headquarter and the valley of Kedrovaya River, 7–8 km upstream of the headquarter (43°05'N, 131°33'E). Hand collecting, pitfall traps, sweeping and sorting forest litter were the main collecting methods. Captured specimens were preserved in 70% ethanol and studied under a microscope. The nomenclature used in this paper follows the World Spider Catalog (2019), except for *Floronia bucculenta* (Clerck, 1757). The species recorded from the Russia for the first time are asterisked (*); new for the “Kedrovaya Pad” Reserve and / or “Leopard Land” National Park species are double asterisked (**).

In the following text, the collector names are abbreviated as follows: LT – L.A. Trilikauskas; PK – P. Kurganov. The all material is deposited in the collection of the Institute of Animal Systematics and Ecology of the Siberian Branch of the Russian Academy of Sciences, Novosibirsk, Russia (ISEA; curator: G. N. Azarkina).

LIST OF SPECIES

Family Agelenidae

***Agelena labyrinthica* (Clerck, 1758)

MATERIAL. Leopard Land: Amba River Valley, 43°29'N, 131°67'E, 18.VIII 2018, 1♀, LT. [Oak (*Quercus mongolicus*) forest, in grass].
DISTRIBUTION. Trans-Palaearctic.

***Allagelena bistrata* (Grube, 1861)

MATERIAL. Leopard Land: Barabash village, 43°10'N, 131°29'E, 18.VIII 2018, 1♂, LT. [In grass].
DISTRIBUTION. Russian Far East (Khabarovskii and Primorskii krai), China.

**Allagelena opulenta* (L. Koch, 1875)

MATERIAL. Kedrovaya Pad: near old headquarter of reserve, 43°05'N, 131°33'E, 17.VIII 2018, 1♀, LT. [In grass].
DISTRIBUTION. Russian Far East (Primorskii krai), Korea, Japan.

***Alloclubionoides manzhuricus* (Ovtchinnikov, 1999)**

MATERIAL. Leopard Land: Ananyevka River, 43°22'N, 131°32'E, 26.VIII 2018, 1♀; Kedrovaya Pad: near old headquarter of reserve, 43°05'N, 131°33'E, 30.VIII 2018, 1♂, LT. [Among stones near a wood path, leaf litter in the oak (*Quercus mongolicus*) and black-fir (*Abies holophylla*) forests].

DISTRIBUTION. Russian Far East (Primorskii krai).

***Alloclubionoides paiki* (Ovtchinnikov, 1999)**

MATERIAL. Leopard Land: cordon on Gryaznaya River, 43°21'N, 131°33'E, 25.VIII 2018, 1♀, PK; environs of Barabash village, Buslenko Mt., 43°10'N, 131°29'E, 9.VIII–02.IX 2018, 2♂, LT; Kedrovaya Pad: near old headquarter of reserve, 43°05'N, 131°33'E, 30.VIII 2018, 1♀, LT; Kedrovaya River at 2–7 km from bridge, 43°06'N, 131°32'E, 30–31.VIII 2018, 2♂, 1♀, LT; environs of Barabash village, Buslenko Mt., 43°10'N, 131°29'E, 02.IX 2018, 1♀, LT. [In boxes near buildings; oak, broad-leaved and black-fir forests, among stones and leaves near a stream].

DISTRIBUTION. Russia (Primorskii krai).

Family Araneidae

***Araneus ishisawai* Kishida, 1928**

MATERIAL. Leopard Land: cordon on Gryaznaya River, 43°10'N, 131°29'E, 26.VIII 2018, 2♀, PK, LT; Kedrovaya Pad: Kedrovaya River at 2–7 km from bridge, 43°06'N, 131°32'E, 30–31.VIII 2018, 2♀, LT. [Broad-leaved and black-fir forests].

DISTRIBUTION. Russian Far East (Primorskii krai), Korea, Japan.

*****Araneus macacus* Uyemura, 1961**

MATERIAL. Leopard Land: environs of Barabash village, 43°10'N, 131°29'E, 18.VIII 2018, 1♀, LT. [Wormwood thicket near a road].

DISTRIBUTION. Zabaikalskii krai, Amurskaya oblast, Khabarovskii krai, Primorskii krai, Sakhalin and Kuril Islands, in Russia, East Mongolia, China, Japan.

*****Araneus marmoreus* Clerck, 1757**

MATERIAL. Leopard Land: Barabashevka River, 7–8 km SE of Ovchinnikovo village, 43°21'N, 131°44'E, 17.VIII 2018, 1♀, LT; cordon on Gryaznaya River, 43°21'N, 131°33'E, 26.VIII 2018, 1♀, LT.

DISTRIBUTION. Holarctic.

HABITATS. Grass meadow, broad-leaved forest.

*****Araneus ventricosus* (L. Koch, 1879)**

MATERIAL. Leopard Land: Barabashevka River, 5 km SE of Ovchinnikovo village, 43°21'N, 131°44'E, 19.VIII 2018, 1♀, LT. [Grass meadow].

DISTRIBUTION. Russian Far East (Primorskii krai), China, Korea, Taiwan, Japan.

*****Argiope bruennichi* (Scopoli, 1772)**

MATERIAL. Leopard Land: environs of Barabash village, 43°10'N, 131°29'E, 18.VIII 2018, 1♀, LT. [Wormwood thicket near a road].

DISTRIBUTION. Trans-Palaeartic.

*****Cyclosa okumae* Tanikawa, 1992**

MATERIAL. Leopard Land: environs of Barabash village, Buslenko Mt., 43°10'N, 131°29'E, 16–17.VIII 2018, 1♀, LT. [Broad-leaved forest].

DISTRIBUTION. Russian Far East (Khabarovskii and Primorskii krai), Korea, Japan.

*****Neoscona adianta* (Walckenaer, 1802)**

MATERIAL. Leopard Land: Barabashevka River, 7–8 km SE of Ovchinnikovo village, 43°21'N, 131°44'E, 17,19.VIII 2018, 6♀, LT; Amba River, 43°29'N, 131°67'E, 18.VIII 2018, 1♀, LT; Kedrovaya Pad: near old headquarter of reserve, 43°05'N, 131°33'E, 31.VIII 2018, 1♀, LT. [Grass meadow, oak forest].

DISTRIBUTION. Trans-Palaearctic.

*****Neoscona scylla* (Karsch, 1879)**

MATERIAL. Leopard Land: environs of Barabash Buslenko Mt., 43°10'N, 131°29'E, 16–17.VIII 2018, 1♀, LT; Barabash River, 8 km from Barabash village, 43°15'N, 131°57'E, 19.VIII 2018, 1♀, LT; Kedrovaya Pad: southern slope of Gakkelevskii Mt., 43°05'N, 131°33'E, 30.VIII 2018, 1♀, LT; Kedrovaya River at 2–7 km from bridge, 43°06'N, 131°32'E, 30.VIII 2018, 3♀, LT; environs of Barabash village, Buslenko Mt., 43°10'N, 131°29'E, 02.IX 2018, 2♂, 3♀, LT. [Broad-leaved, ash and oak forests].

DISTRIBUTION. Russian Far East (Primorskii krai), China, Korea, Japan.

*****Neoscona scylloides* (Bösenberg et Strand, 1906)**

MATERIAL. Leopard Land: environs of Barabash village, Buslenko Mt., 43°10'N, 131°29'E, 16-17.VIII 2018, 1♀, LT. [Oak forest].

DISTRIBUTION. Russian Far East (Primorskii krai), China, Korea, Taiwan, Japan.

Family Clubionidae

***Clubiona kimyongkii* Paik, 1990**

MATERIAL. Leopard Land: Ananyevka River, 43°22'N, 131°32'E, 26.VIII.2018, 1♂, LT. [Black-fir forest, among stones].

DISTRIBUTION. Russian Far East (Primorskii krai), China, Korea.

Family Cybaeidae

***Cybaeus* sp.**

MATERIAL. Leopard Land: environs of Barabash village, Buslenko Mt., 43°10'N, 131°29'E, 29.VIII–02.IX 2018, 2♂, LT. [Broad-leaved forest].

DISTRIBUTION. Russian Far East (Primorskii krai).

NOTES. It is an undescribed species known from Primorskii krai only.

Family Gnaphosidae

***Drassyllus biglobus* Paik, 1986**

MATERIAL. Leopard Land: environs of Barabash village, Buslenko Mt., 43°10'N, 131°29'E, 16–17.VIII 2018, 1♀, LT. [Broad-leaved forest]

DISTRIBUTION. Russian Far East (Primorskii krai), Korea.

*****Gnaphosa inconspicua* Simon, 1878**

MATERIAL. Leopard Land: environs of Barabash village, Buslenko Mt., 43°10'N, 131°29'E, 17–22.VIII 2018, 1♀, LT; cordon on Gryaznaya River, 43°21'N, 131°33'E, 25.VIII 2018, 1♀, LT, PK. [Broad-leaved forest].

DISTRIBUTION. Trans-Palaeartic.

*****Kishidaia conspicua* (L. Koch, 1866)**

MATERIAL. Leopard Land: cordon on Gryaznaya River, 43°21'N, 131°33'E, 27.VIII 2018, 1♀, LT. [Broad-leaved forest].

DISTRIBUTION. Palaeartic species, with a disjunction between East Kazakhstan and south part of Russian Far East (Amurskaya oblast, Khabarovskii and Primorskii krai).

Family Hahnidae

*****Neoantistea quelpartensis* Paik, 1958**

MATERIAL. Leopard Land: environs of Barabash village, Buslenko Mt., 43°10'N, 131°29'E, 17–22.VIII 2018, 1♂, LT; cordon on Gryaznaya River, 43°21'N, 131°33'E, 25.VIII 2018, 1♀, LT, PK. [Broad-leaved forest].

DISTRIBUTION. Russian Far East (Primorskii krai), China, Korea, Japan.

Family Linyphiidae

*****Agyneta nigra* (Oi, 1960)**

MATERIAL. Leopard Land: Barabash village, 43°10'N, 131°29'E, 16.VIII 2018, 1♂, LT. [Anthropogenic landscape].

DISTRIBUTION. East Siberia, Russian Far East (Primorskii krai), Japan, Korea, China, Mongolia.

*****Anguliphantes maritimus* (Tanasevitch, 1988)**

MATERIAL. Kedrovaya Pad: small spring at Buslenko Mt., 43°10'N, 131°29'E, 02.IX 2018, 1♀, LT. [Broad-leaved forest, among leaves and stones near a stream].

DISTRIBUTION. Russian Far East (Amurskaya oblast, Khabarovskii and Primorskii krai), China.

****Anguliphantes nasus* (Paik, 1965)**

MATERIAL. Kedrovaya Pad: Kedrovaya River at 2–7 km from bridge, 43°06'N, 131°31'E, 30.VIII.2018, 3♀, LT. [Broad-leaved forest].

DISTRIBUTION. Russian Far East (Primorskii krai), China, Korea.

*****Crispiphantes rhomboides* (Paik, 1985)**

MATERIAL. Leopard Land: Barabash River, 8 km of Barabash village, 43°15'N, 131°57'E, 19.VIII 2018, 1♀, LT; cordon on Gryaznaya River, 43°21'N, 131°33'E, 25.VIII 2018, 2♀, LT, PK. [Broad-leaved and ash forests].

DISTRIBUTION. Russian Far East (Primorskii krai), Korea.

*****Doenitzius pruvus* Oi, 1960**

MATERIAL. Leopard Land: Ananyevka River, 43°22'N, 131°32'E, 26.VIII 2018, 1♂, LT. [Black-fir forest].

DISTRIBUTION. Russian Far East (Primorskii krai), China, Korea, Japan.

*****Drapetisca socialis* (Sundevall, 1833)**

MATERIAL. Leopard Land: cordon on Gryaznaya River, 43°21'N, 131°33'E, 25.VIII 2018, 2♀, LT, PK; Kedrovaya Pad: Kedrovaya River at 2–7 km from bridge, 43°06'N, 131°31'E, 30.VIII 2018, 2♀, LT. [Broad-leaved forest].

DISTRIBUTION. Trans-Palaeartic.

***Eldonnia kayacensis* (Paik, 1965)**

MATERIAL. Leopard Land: cordon on Gryaznaya River, 43°21'N, 131°33'E, 25–27.VIII 2018, 2♀, LT, PK; Kedrovaya Pad: Kedrovaya River at 2–7 km from bridge, 43°06'N, 131°31'E, 31.VIII 2018, 2♀, LT; small spring at Buslenko Mt., 43°10'N, 131°29'E, 02.IX 2018, 1♀, LT. [Broad-leaved and black-fir forests].

DISTRIBUTION. Russian Far East (Primorskii krai), Korea, Japan.

*****Floronia bucculenta* (Clerck, 1757)**

MATERIAL. Leopard Land: environs of Barabash village, Buslenko Mt., 43°10'N, 131°29'E, 20.VIII 2018, 1♀, LT; cordon on Gryaznaya River, 43°21'N, 131°33'E, 25.VIII 2018, 1♂, LT, PK; Kedrovaya Pad: Kedrovaya River at 2–7 km from bridge, 43°06'N, 131°31'E, 30.VIII 2018, 1♂, LT; small spring at Buslenko Mt., 43°10'N, 131°29'E, 02.IX 2018, 1♀, LT. [Oak and broad-leaved forest].

DISTRIBUTION. Trans-Palaeartic.

*****Lepthyphantes hirsutus* Tanasevitch, 1987**

MATERIAL. Kedrovaya Pad: small spring at Buslenko Mt., 43°10'N, 131°29'E, 02.IX 2018, 1♂, LT. [Oak forest].

DISTRIBUTION. Russian Far East (Primorskii krai).

*****Maso sundevalli* (Westring, 1851)**

MATERIAL. Leopard Land: environs of Barabash village, Buslenko Mt., 43°10'N, 131°29'E, 17–22.VIII 2018, 1♀, LT. [Broad-leaved forest].

DISTRIBUTION. Holarctic.

***Microneta viaria* (Blackwall, 1841)**

MATERIAL. Kedrovaya Pad: Kedrovaya River at 2–7 km from bridge, 43°06'N, 131°31'E, 31.VIII 2018, 1♂, LT. [Black-fir forest].

DISTRIBUTION. Holarctic.

*****Neriere clathrata* (Sundevall, 1830)**

MATERIAL. Leopard Land: cordon on Gryaznaya River, 43°21'N, 131°33'E, 25.VIII 2018, 4♀, LT, PK. [Broad-leaved forest].

DISTRIBUTION. Holarctic.

*****Neriere emphana* (Walckenaer, 1841)**

MATERIAL. Leopard Land: environs of Barabash village, Buslenko Mt., 43°10'N, 131°29'E, 16–17.VIII 2018, 1♀, LT; same locality, 17–29.VIII 2018, 5♀, LT; Kedrovaya Pad: Kedrovaya River at 2–7 km from bridge, 43°06'N, 131°31'E, 30–31.VIII 2018, 2♀, LT. [Broad-leaved and black-fir forests].

DISTRIBUTION. Trans-Palaeartic.

*****Neriene limbatinella* (Bösenberg et Srand, 1906)**

MATERIAL. Leopard Land: cordon on Gryaznaya River, 43°21'N, 131°33'E, 24, 27.VIII 2018, 1♂, 1♀, LT, PK; Kedrovaya Pad: Kedrovaya River at 2–7 km from bridge, 43°06'N, 131°31'E, 30.VIII 2018, 1♀, LT. [Broad-leaved forest].

DISTRIBUTION. Russia (Khabarovkii and Primorskii kraï), China, Korea, Japan.

*****Neriene radiata* (Walckenaer, 1841)**

MATERIAL. Leopard Land: cordon on Gryaznaya River, 43°21'N, 131°33'E, 24.VIII 2018, 1♀, LT. [Broad-leaved forest].

DISTRIBUTION. Holarctic.

*****Oedothorax hulongensis* Zhu et Wen, 1980**

MATERIAL. Leopard Land: cordon on Gryaznaya River, 43°21'N, 131°33'E, 24.VIII 2018, 1♀, LT, PK. [Broad-leaved forest].

DISTRIBUTION. Russia (Primorskii kraï), China, Korea.

*****Pacifiphantes zakharovi* Eskov et Marusik, 1994**

MATERIAL. Leopard Land: Barabashevka River, 3 km SE of Barabash village, 43°17'N, 131°33'E, 19–22.VIII 2018, 1♀, LT; cordon on Gryaznaya River, 43°21'N, 131°33'E, 24–26.VIII 2018, 2♂, 12♀, LT, PK; Kedrovaya Pad: Kedrovaya River at 2–7 km from bridge, 43°06'N, 131°31'E, 30–31.VIII 2018, 3♂, 4♀, LT. [Flood forests (*Padus avium*, *Juglans mandshurica*, *Lonicara* sp.), broad-leaved and black-fir forests].

DISTRIBUTION. Russian Far East (Khabarovkii and Primorskii kraï), China, Korea.

Family Liocranidae

*****Agroeca coreana* Namkung, 1989**

MATERIAL. Leopard Land: environs of Barabash village, Buslenko Mt., 43°10'N, 131°29'E, 17–22.VIII 2018, 1♀, LT. [Broad-leaved forest].

DISTRIBUTION. Russian Far East (Primorskii kraï), Korea, Japan.

Family Lycosidae

*****Alopecosa cinnameopilosa* (Schenkel, 1963)**

MATERIAL. Leopard Land: cordon on Gryaznaya River, 43°21'N, 131°33'E, 24.VIII 2018, 1♀, LT, PK. [Broad-leaved forest].

DISTRIBUTION. From Central Asia to Russian Far East (Primorskii kraï), China, Korea, Japan.

*****Alopecosa virgata* (Kishida, 1909)**

MATERIAL. Leopard Land: environs of Barabash village, Buslenko Mt., 43°10'N, 131°29'E, 20. VIII 2018, 22.VIII–02.IX 2018, 3♀, LT. [Broad-leaved forest].

DISTRIBUTION. Russian Far East (Khabarovkii and Primorskii kraï), Korea, Japan.

*****Pardosa brevivulva* Tanaka, 1975**

MATERIAL. Leopard Land: Barabashevka River, 7–8 km SE of Ovchinnikovo village, 43°21'N, 131°43'E, 17.VIII 2018, 1♀, LT. [Edge of the flood forest, grass meadow].

DISTRIBUTION. Russian Far East (Khabarovkii and Primorskii kraï), Korea, Japan.

***Pardosa cf. lugubris* (Walckenaer, 1802)**

MATERIAL. Leopard Land: environs of Barabash village, Buslenko Mt., 43°10'N, 131°29'E, 16. VIII–02.IX 2018, 14♀, LT. [Oak and broad-leaved forest].

NOTES. It is a well-known but undescribed species.

*****Pardosa herbosa* Jo et Paik, 1984**

MATERIAL. Leopard Land: cordon on Gryaznaya River, 43°10'N, 131°29'E, 26.VIII 2018, 1♀, PK. [Broad-leaved forest].

DISTRIBUTION. Russian Far East (Primorskii krai), China, Korea, Japan.

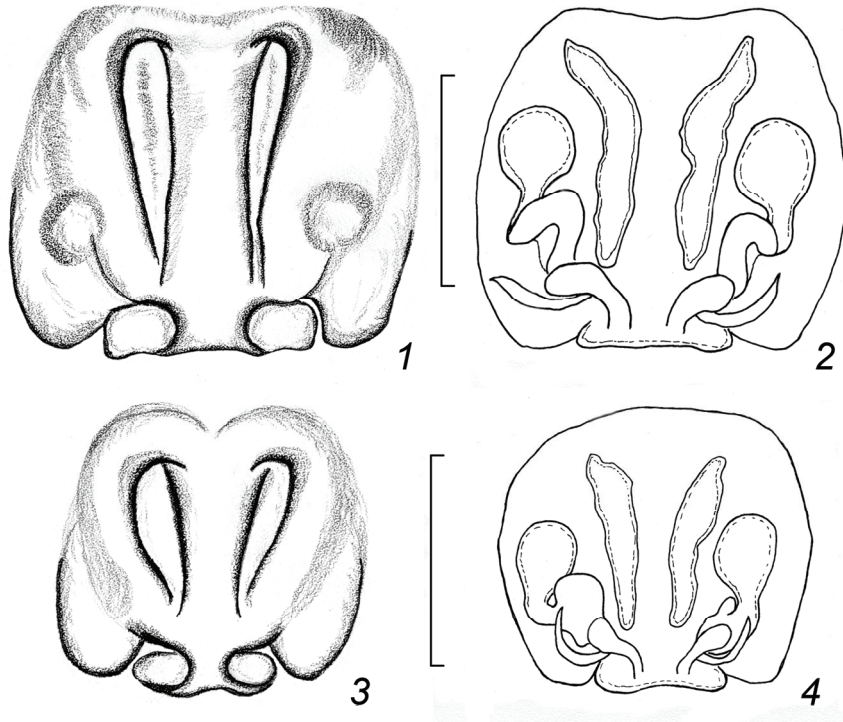
****Pardosa laevitarsis* Tanaka et Suwa, 1986**

Figs 1, 2

MATERIAL. Leopard Land: Amba River Valley, 43°29'N, 131°67'E, 18.VIII 2018, 1♀, LT. [Oak forests].

DISTRIBUTION. Russian Far East (Primorskii krai), Japan.

NOTES. This species differs from *P. laura* in the female copulatory organs (Figs 1, 2 vs. Figs 3, 4).



Figs 1–4. Epigyne of *Pardosa* spp. 1, 2 – *P. laevitarsis*: 1 – ventral view, 2 – dorsal view; 3, 4 – *P. laura*: 3 – ventral view, 4 – dorsal view. Scale bar = 0,5 mm.

*****Pardosa laura* Karsch, 1879**

Figs 3, 4

MATERIAL. Leopard Land: Barabashevka River, 7–8 km SE of Ovchinnikovo village, 43°21'N, 131°43'E, 17.VIII 2018, 2♀, LT. [Edge of an inundated forest, grass meadow].

DISTRIBUTION. Russia (Khabarovkii and Primorskii kraï), China, Korea, Taiwan, Japan.

*****Piratula piratoides* (Bösenberg et Strand, 1906)**

MATERIAL. Leopard Land: cordon on Gryaznaya River, 43°21'N, 131°33'E, 24.VIII 2018, 1♀, LT, PK. [Broad-leaved forest].

DISTRIBUTION. Russian Far East (Primorskii kraï), China, Korea, Japan.

*****Piratula yaginumai* (Tanaka, 1974)**

MATERIAL. Leopard Land: Barabashevka River 8 km from Barabash village, 43°15'N, 131°57'E, 19.VIII 2018, 1♀, LT; cordon on Gryaznaya River, 43°21'N, 131°33'E, 24.VIII 2018, 1♀, LT, PK. [Broad-leaved and ash forests].

DISTRIBUTION. Russian Far East (Primorskii kraï, Sakhalin Island), China, Korea, Japan.

*****Trochosa terricola* Thorell, 1856**

MATERIAL. Leopard Land: cordon on Gryaznaya River, 43°21'N, 131°33'E, 26.VIII 2018, 1♂, 2♀, LT, PK; Kedrovaya Pad: small spring at Buslenko Mt., 02.IX 2018, 1♂, LT. [Broad-leaved forest].

DISTRIBUTION. Holarctic.

Family Miturgidae

****Zora lyriformis* Song, Zhu et Gao, 1993**

MATERIAL. Leopard Land: cordon on Gryaznaya River, 43°21'N, 131°33'E, 25.VIII 2018, 1♀, LT, PK; Ananyevka River, 26.VIII 2018, 3♀, LT. [Broad-leaved and black-fir forests].

DISTRIBUTION. Russian Far East (Primorskii kraï), China.

Family Philodromidae

*****Philodromus spinitarsis* Simon, 1895**

MATERIAL. Leopard Land: environs of Barabash village, Buslenko Mt., 43°10'N, 131°29'E, 16.VIII 2018, 1♀, LT. [Broad-leaved forest].

DISTRIBUTION. South Siberia, Russian Far East (Khabarovkii and Primorskii kraï), China, Korea, Japan

Family Pholcidae

*****Pholcus phungiformes* Oligier, 1983**

MATERIAL. Leopard Land: cordon on Gryaznaya River, 43°21'N, 131°33'E, 27.VIII 2018, 1♂, LT. [Indoor].

DISTRIBUTION. Russian Far East (Primorskii kraï, Sakhalin and Kuril Islands).

Family Phrurolithidae

*****Phrurolithus festivus* (C.L. Koch, 1835)**

MATERIAL. Leopard Land: cordon on Gryaznaya River, 43°21'N, 131°33'E, 24.VIII 2018, 1 ♀, LT, PK. [Broad-leaved forest].
DISTRIBUTION. Trans-Palaeartic.

*****Phrurolithus palgongensis* Seo, 1988**

MATERIAL. Leopard Land: cordon on Gryaznaya River, 43°21'N, 131°33'E, 25.VIII 2018, 1 ♀, LT, PK. [Broad-leaved forest].
DISTRIBUTION. Russian Far East (Primorskii krai), China, Korea.

Family Pisauridae

*****Dolomedes fimbriatus* (Clerck, 1758)**

MATERIAL. Leopard Land: Barabashevka River, 7–8 km SE of Ovchinnikovo village, 43°21'N, 131°43'E, 17.VIII 2018, 1 ♀, LT. [Willow thicket].
DISTRIBUTION. Trans-Palaeartic.

*****Pisaura lama* Bösenberg et Strand, 1906**

MATERIAL. Leopard Land: cordon on Gryaznaya River, 43°21'N, 131°33'E, 25.VIII 2018, 2 juv. LT, PK. [Broad-leaved forest].
DISTRIBUTION. Russia (Primorskii krai, Kunashir Island), China, Korea, Japan.

Family Salticidae

*****Asianellus festivus* (C.L. Koch, 1834)**

MATERIAL. Leopard Land: Barabash village, 43°10'N, 131°29'E, 16.VIII 2018, 1 ♂, LT. [Anthropogenic landscape, grass meadow].
DISTRIBUTION. Trans-Palaeartic.

***Euophrys kataokai* Ikeda, 1996**

MATERIAL. Kedrovaya Pad: small spring at Buslenko Mt., 43°10'N, 131°29'E, 02.IX 2018, 1 ♂, LT. [Oak forest].
DISTRIBUTION. Russian Far East (Khabarovskii and Primorskii krai, Kuril Islands), China, Korea, Japan.

***Evarcha albaria* (L. Koch, 1878)**

MATERIAL. Leopard Land: Amba River 43°29'N, 131°67'E, 18.VIII 2018, 1 ♂, LT. [Oak forest].
DISTRIBUTION. The Russian Far East (Primorskii krai), China, Korea, Japan.

***Mendoza elongata* (Karsch, 1879)**

MATERIAL. Leopard Land: Barabashevka River, 7–8 km SE of Ovchinnikovo village, 43°21'N, 131°43'E, 16–17.VIII 2018, 2 ♂, 2 ♀, LT. [Edge of an inundated forest, grass meadow].
DISTRIBUTION. Russian Far East (Khabarovskii and Primorskii krai), China, Korea, Japan.

***Phintella castresiana* (Grube, 1861)**

MATERIAL. Kedrovaya Pad: Kedrovaya River at 2–7 km from bridge, 43°06'N, 131°31'E, 30.VIII 2018, 1♀, LT. [Broad-leaved forest].

DISTRIBUTION. Trans-Palaearctic.

***Sitticus albolineatus* (Kulczyński, 1895)**

MATERIAL. Leopard Land: cordon on Gryaznaya River, 43°21'N, 131°33'E, 25.VIII 2018, 2♀, LT, PK. [Broad-leaved forest].

DISTRIBUTION. Russia (Krasnoyarskii krai, Tuva, Khakassia, Irkutskaya oblast, Zabaikalskii and Primorskii krai), China, Korea.

***Synagelides agoriformis* Strand, 1906**

MATERIAL. Leopard Land: cordon on Gryaznaya River, 43°21'N, 131°33'E, 25.VIII 2018, 1♂, LT, PK; Nadezhdinskii Distr., Ananyevka River Valley, nr. the mountain pass to Gryaznaya River Valley, 43°22'N, 131°32'E, 26.VIII.2018, 1♂, LT; Kedrovaya Pad: southern slope of the Gakkelevskii Mt., 43°05'N, 131°33'E, 30.VIII 2018, 1♂, LT. [Broad-leaved, oak and black-fir forests].

DISTRIBUTION. Russian Far East (Primorskii krai, Kuril Islands), China, Korea, Japan.

***Synagelides zhilcovae* Prószyński, 1979**

MATERIAL. Leopard Land: cordon on Gryaznaya River, 43°21'N, 131°33'E, 25.VIII 2018, 1♂, LT, PK; Ananyevka River, 43°22'N, 131°32'E, 26.VIII 2018, 1♀, LT. [Broad-leaved and black-fir forests].

DISTRIBUTION. Russian Far East: (Khabarovskii and Primorskii krai, Kuril Islands), China, Korea, Japan.

NOTES. Endemic to Kedrovaya Pad Reserve (Prószyński, 1979; Dunin, 1984; Logunov & Marusik, 2000).

***Yaginumella medvedevi* (Prószyński, 1979)**

MATERIAL. Leopard Land: environs of Barabash village, Buslenko Mt., 43°10'N, 131°29'E, 02, 20, 22.VIII 2018, 2♂, 2♀, LT; cordon on Gryaznaya River, 43°21'N, 131°33'E, 25.VIII 2018, 2♂, LT, PK; Ananyevka River, 43°22'N, 131°32'E, 26.VIII.2018, 1♀, LT; Kedrovaya Pad: southern slope of the Gakkelevskii Mt., 43°05'N, 131°33'E, 30.VIII 2018, 1♀, LT; Kedrovaya River at 2–7 km from bridge, 43°06'N, 131°31'E, 31.VIII 2018, 1♀, LT; small spring at Buslenko Mt., 43°10'N, 131°29'E, 02.IX 2018, 1♀, LT. [Broad-leaved, oak and black-fir forests].

DISTRIBUTION. Russian Far East (Amurskaya oblast, Khabarovskii and Primorskii krai), China, Korea.

Family Tetragnathidae

***Diphya wulingensis* Yu, Zhang et Omelko, 2014**

MATERIAL. Leopard Land: environs of Barabash village, Buslenko Mt., 43°10'N, 131°29'E, 20.VIII 2018, 1♀, LT; cordon on Gryaznaya River, 43°21'N, 131°33'E, 24, 27.VIII 2018, 2♀, LT, PK; Kedrovaya Pad: Kedrovaya River at 2–7 km from bridge, 43°06'N, 131°31'E, 30–31.VIII 2018, 1♂, 2♀, LT. [Broad-leaved, oak and black-fir forests].

DISTRIBUTION. Russian Far East (Primorskii krai), China.

*****Leucauge subgemma* Bösenberg et Strand, 1906**

MATERIAL. Kedrovaya Pad: near old headquarter of reserve, 43°05'N, 131°33'E, 17.VIII 2018, 2♀, LT. [In grass].

DISTRIBUTION. Russian Far East (Primorskii krai), China, Korea, Japan.

***Metellina ornata* (Chikuni, 1955)**

MATERIAL. Kedrovaya Pad: Kedrovaya River at 2–7 km from bridge, 43°06'N, 131°31'E, 30.VIII 2018, 1♂, 1♀, LT.

DISTRIBUTION. Russian Far East (Primorskii krai), China, Korea, Japan.

HABITATS. Broadleaved forest.

Family Theridiidae

*****Parasteatoda lunata* (Clerck, 1758)**

MATERIAL. Leopard Land: cordon on Gryaznaya River, 43°21'N, 131°33'E, 25.VIII 2018, 1♀, LT, PK. [Broad-leaved forest].

DISTRIBUTION. Trans-Palaearctic.

*****Phycosoma labialis* Zhu, 1998**

MATERIAL. Kedrovaya Pad: small spring at Buslenko Mt., 43°10'N, 131°29'E, 02.IX 2018, 1♀, LT. [Broad-leaved forest, among leaves and stones near a stream].

DISTRIBUTION. Russian Far East (Primorskii krai), China.

Family Thomisidae

*****Ebelinga kumadai* (Ono, 1985)**

MATERIAL. Leopard Land: cordon on Gryaznaya River, 43°21'N, 131°33'E, 24.VIII 2018, 1♀, LT, PK. [Broad-leaved forest].

DISTRIBUTION. Russian Far East (Khabarovskii and Primorskii krai), China, Korea, Japan.

***Oxytate* sp.**

MATERIAL. Leopard Land: environs of Barabash village, Buslenko Mt., 43°10'N, 131°29'E, 20.VIII 2018, 1 juv., LT. [Oak forest].

NOTES. Correct determination of species by juvenile specimens is impossible.

*****Ozyptila gertschi* Kurata, 1944**

MATERIAL. Leopard Land: cordon on Gryaznaya River, 43°21'N, 131°33'E, 26.VIII 2018, 1♀, PK. [Broad-leaved forest].

DISTRIBUTION. Holarctic, with a disjunction between the Urals and Kamtchatka.

*****Ozyptila utotchkini* Marusik, 1990**

MATERIAL. Leopard Land: Ananyevka River, 43°22'N, 131°32'E, 26.VIII 2018, 1♀, LT. [Black-fir forest].

DISTRIBUTION. Russian Far East (Khabarovskii and Primorskii krai), Korea.

*****Pistius undulatus* Karsch, 1879**

MATERIAL. Leopard Land: environs of Barabash village, Buslenko Mt., 43°10'N, 131°29'E, 16–17.VIII 2018, 1♀, LT; cordon on Gryaznaya River, 43°21'N, 131°33'E, 26.VIII 2018, 1 juv., LT. [Oak and inundated mixed forests].

DISTRIBUTION. Russia (Siberia, Far East).

*****Xysticus acerbus* Thorell, 1872**

MATERIAL. Leopard Land: cordon on Gryaznaya River, 43°21'N, 131°33'E, 25.VIII 2018, 1♀, LT, PK. [Broad-leaved forest].

DISTRIBUTION. Trans-Palaeartic.

***Xysticus concretus* Utotschkin, 1968**

MATERIAL. Leopard Land: cordon on Gryaznaya River, 43°21'N, 131°33'E, 24.VIII 2018, 1♀, LT, PK. [Broad-leaved forest].

DISTRIBUTION. Russian Far East (Primorskii krai, Kuzmina Bay?, Solyanoye Lake?), China, Korea, Japan.

CONCLUSION

A preliminary list of spiders of the “Leopard Land” National Park and the “Kedrovaya Pad” Nature Reserve consists of 77 species in 55 genera and 18 families. Five species are recorded from Russia for the first time. Fifty-seven species are new for the territory of the “Leopard Land” National Park and the “Kedrovaya Pad” Nature Reserve. Two thirds of the species are exclusively restricted to the south of the Russian Far East and the adjacent territories of China, Japan and Korea, and only 21 species are widespread in the Palaeartic and Holarctic regions. Forests in the studied restricted areas are notable for their well-developed litter and a complex structure of vegetation. Along with the unique geographical location and natural conditions, the forest habitat structure creates favorable conditions for representatives of many taxa and various ecological groups of spiders. Wherefore, an estimated number of spiders in the “Leopard Land” National Park and the “Kedrovaya Pad” Nature Reserve should be at least 350–400 species.

The female copulatory organs of *Pardosa laevitarsis* Tanaka et Suwa, 1986 and *P. laura* Karsch, 1879 are also illustrated.

ACKNOWLEDGEMENTS

The author is grateful to the staff members of the “Leopard Land” National Park A. Titov, P. Sonin, E. Bisikalova and P. Kurganov for help conducting research. My special thanks go to D. Logunov (Manchester Museum, University of Manchester, UK) for the help in translation the earlier draft into the English and valuable comments of the manuscript. I am much obliged to Dr. G. Azarkina (ISEA, Novosibirsk) for her help in *Xysticus concretus* Utotschkin, 1968 and *Philodromus spinatarsis* Simon, 1895 identification. The author is grateful to G. Azarkina and R. Dudko for help in preparing the drawings.

The study was supported by The Federal Fundamental Scientific Research Program for 2013-2020 (No. AAAA-A16-116121410123-1).

REFERENCES

- Dunin, P.M. 1984. Material on the spider fauna from the Far East (Arachnida, Aranei). 1. Family Salticidae. P. 128–140. *In*: Lehr, P.A. (Ed.). *Fauna and ecology of insects in the south of the Far East*. Vladivostok. [In Russian]
- Eskov, K.Yu. & Marusik, Yu.M. 1992. On the mainly Siberian spider genera *Wubanooides*, *Parawubanooides* gen. n. and *Poecilioneta* (Aranei, Linyphiidae). *Arthropoda selecta*, 1(1): 21–38.
- Eskov, K.Yu. & Marusik, Yu.M. 1994. New data on the taxonomy and faunistics of North Asian linyphiida spiders (Aranei Linyphiidae). *Arthropoda selecta*, 2(4): 41–79.
- Logunov, D.V. 1998. New species and new records of Palearctic *Sitticus* (Aranei: Salticidae). *Zoosystematica Rossica*, 7(1): 77–83.
- Logunov, D.V. & Marusik, Yu.M. 2000a. Miscellaneous notes on Palearctic Salticidae (Arachnida: Aranei). *Arthropoda selecta*, 8(4): 263–292.
- Logunov, D.V. & Marusik, Yu.M. 2000b. *Catalogue of the jumping spiders of northern Asia (Arachnida, Araneae, Salticidae)*. KMK Scientific Press Ltd., Moscow. 299 pp.
- Marusik, Yu.M. 2009. Annotated check-list of spiders of Lazo Reserve. P. 380–392. *In*: Storozhenko, S.Yu. (Ed.). *Insects of Lazovsky Nature Reserve*. Dalnauka, Vladivostok. 464 pp. [In Russian]
- Marusik, Yu.M. & Koponen, S. 2000. New data on spiders (Aranei) from Maritime Province, Russian Far East. *Arthropoda selecta*, 9(1): 55–68.
- Marusik, Yu.M. & Logunov, D.V. 1991. Poorly known spider species of the families Salticidae and Thomisidae (Aranei) of the Soviet Far East. *Entomological studies in the North-East of the USSR*, 2: 131–140. [In Russian]
- Marusik, Yu.M. & Logunov, D.V. 2017. New faunistic and taxonomic data on spiders (Arachnida, Aranei) from the Russian Far East. *Acta Arachnologica*, 66(2): 87–96.
- Marusik, Yu.M., Omelko, M.M. & Koponen, S. 2016. Rare and new for the fauna of the Russian Far East spiders (Aranei). *Far Eastern Entomologist*, 317: 1–15.
- Marusik, Yu.M., Omelko, M.M. & Koponen, S. 2017. First record of *Diphya wulingensis* Yu, Zhang et Omelko, 2014 (Aranei: Tetragnathidae) in Russia. *Arthropoda selecta*, 26(2): 139–144.
- Marusik, Yu.M., Omelko, M.M., Simonov, P.S. & Koponen, S. 2015. New data about orb-weaving spiders (Aranei: Araneidae and Tetragnathidae) from the Russian Far East. *Arthropoda selecta*, 24(2): 207–214.
- Marusik, Yu.M., Tanasevitch, A.V., Kurenshchikov, D.K. & Logunov, D.V. 2007. A checklist of the spiders (Araneae) of the Bolshekhkhtsyrski Nature Reserve, Khabarovsk Province, The Russian Far East. *Acta Arachnologica Sinica*, 16(1): 37–64.
- Mikhailov, K.G. 1992. The spiders genus *Cliubiona* Latreille, 1804 (Arachnida, Aranei, Clubionidae) in the USSR fauna. *Arthropoda selecta*, 1(3): 3–34.
- Mikhailov, K.G. 2013. The spiders (Arachnida: Aranei) of Russia and adjacent countries: an non-annotated checklist. *Arthropoda selecta. Supplement 3*. KMK Scientific Press Ltd., Moscow. 262 pp.
- Omelko, M.M., Marusik, Yu.M. & Koponen, S. 2011. A survey of the East Palearctic Lycosidae (Aranei). 8. The genus *Pirata* Sundevall, 1833 and *Piratula* Roewer, 1960 in the Russian Far East. *Arthropoda selecta*, 20(3): 195–232.
- Ovtchinnikov, S.V. 1999. On the supraspecific systematic of the subfamily Coelotinae (Araneae, Amaurobiidae) of the former USSR fauna. *Tethys Entomological Research*, 1: 63–80. [In Russian with English summary]

- Prószyński, J. 1979. Systematic studies on East Palaearctic Salticidae, III. Remarks on Salticidae of the USSR. *Annales Zoologica*, 34(11): 299–369.
- Tanasevitch, A.V. 2008. New records of linyphiid spiders from Russia, with taxonomic and nomenclatural notes (Aranei: Linyphiidae). *Arthropoda selecta*, 16(2): 115–135.
- World Spider Catalog. 2019. *World Spider Catalog. Version 20.0*. Natural History Museum Bern, online at <http://wsc.nmbe.ch> (Accessed 15 February 2019). DOI: 10.24436/2