

## Correspondence

<http://urn:lsid:zoobank.org:pub:8CEA061C-AA0E-4787-9A30-70C3E369DA91>

**Hao-Yu Liu, Dong-Xiao Zhang, Fu-Ming Shi\***. NEW SPECIES OF THE GENUS *LOXOBLEMMUS* SAUSSURE, 1877 (ORTHOPTERA: GRYLLIDAE) FROM SICHUAN PROVINCE, CHINA. – *Far Eastern Entomologist*. 2016. N 315: 7-10.

*The Key Laboratory of Zoological Systematics and Application, College of Life Sciences, Hebei University, Baoding 071002, Hebei Province, China. \*Corresponding author, E-mail: shif\_m@126.com*

**Summary.** *Loxoblemmus montanus* sp. n. is described from Sichuan province, China. New species is similar to *L. spectabilis* Gorochov et Kostia, 1993 from Korea, but differs from the latter by small size and by the shape of male frontal rostrum.

**Key words:** : Orthoptera, Gryllidae, taxonomy, new species, China.

**Х. Ю. Лю, Д. С. Чжан, Ф. М. Ши. Новый вид рода *Loxoblemmus* Saussure, 1877 (Orthoptera: Gryllidae) из провинции Сычуань, Китай // Дальневосточный энтомолог. 2016. N 315. С. 7-10.**

**Резюме.** Из провинции Сычуань в Китае описан *Loxoblemmus montanus* sp. n. Новый вид сходен с *L. spectabilis* Gorochov et Kostia, 1993 из Кореи, но отличается от него меньшими размерами и формой рострума самца.

The genus *Loxoblemmus* was proposed by Saussure (1877). Later *Loxoblemmus equestris* Saussure 1877 was designated as the type species (Kirby, 1906). Up to now, it includes 59 species and mostly distributed in tropical and subtropical regions of Old World (Eades *et al.*, 2016). Seven species of this genus from Japan and five species from Korea are known (Ichikawa *et al.*, 2006; Storozhenko *et al.*, 2015). Sixteen species of *Loxoblemmus* are recorded from China, mainly from the Southern mainland and Taiwan (Yin & Liu, 1995; Liu & Shi, 2014). One new species is found in Sichuan province of China and described below. The holotype and paratypes of the new species are deposited in the Museum of Hebei University, Baoding, China (MHBU).

### DESCRIPTION OF A NEW SPECIES

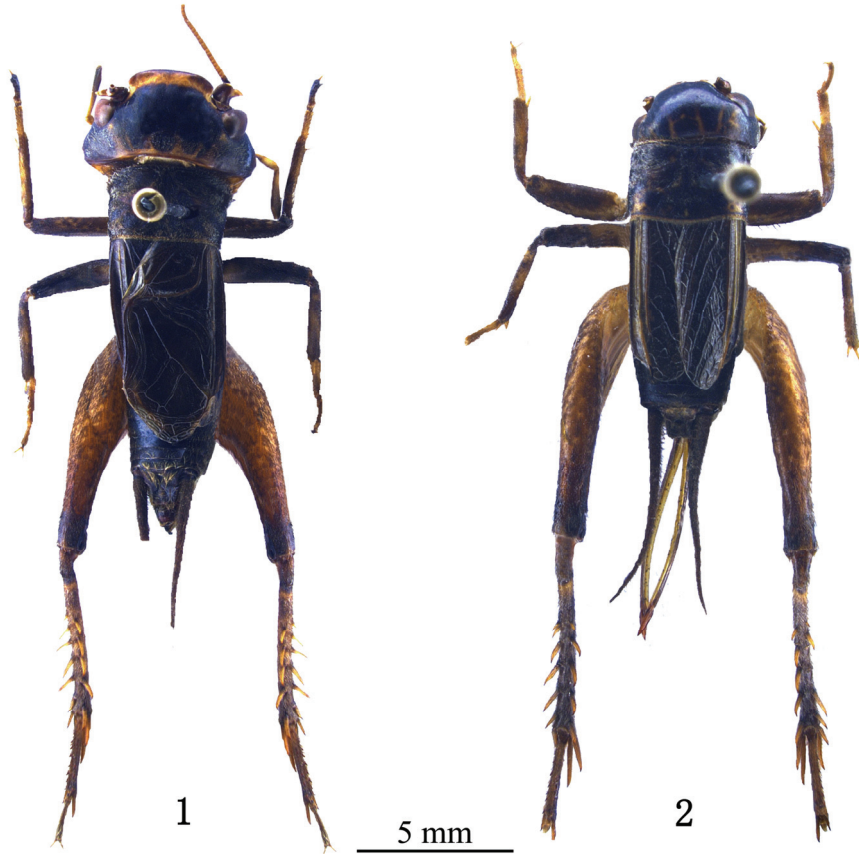
***Loxoblemmus montanus* Liu, Zhang et Shi, sp. n.**

Figs 1–7

**MATERIAL.** Holotype – ♂, **China:** Sichuan province: Zhaojue, 19.VIII 2007, coll. Fu-Ming Shi. Paratypes: 6 ♂, 1 ♀, the same data as for holotype.

**DESCRIPTION. MALE.** Body medium size. Head flat and oblique, with several wrinkles in frons. Head distinctly wider than anterior margin of pronotum; process of scapus rather short and angular; eyes small and oval, located on both sides of the head; median ocellus rounded, located on the middle of frontal rostrum in ventral surface; lateral ocelli slightly smaller, located on both sides of frontal rostrum in dorsal surface; frontal rostrum distinctly wide, about 4.4 times as broad as scapus; apical margin of frontal rostrum slightly rounded,

nearly straight; genae distinctly extended to both sides and exceeding eyes, with lateral projection not exceeding eyes. Pronotum transverse, slightly narrowed posteriorly; anterior and posterior margins straight, width of anterior margin about 2.0 times its length. Tegmina short, reaching 7th abdominal tergite, with 3 oblique vein; mirror irregularly oblong, about 1.2 times as long as wide; apical area very short, with irregular veins; lateral area with 6 oblique longitudinal veins; hind wings absent. Fore tibia with a small and rounded internal tympanum and a large and ovoid external tympanum; hind femur strong, about 3.0 times as long as maximal width; hind tibia with 5 pairs of dorsal spines.



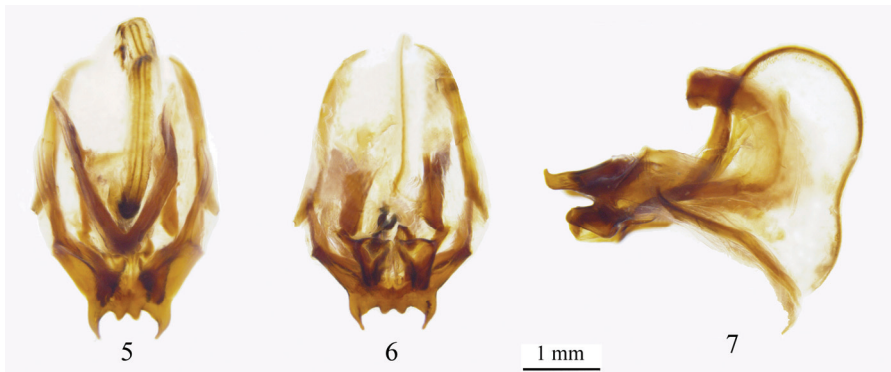
Figs. 1–2. *Loxoblemmus montanus* sp. n., body from above. 1 – male, 2 – female.

Supra anal plate widened at base, narrowed posteriorly, about 0.7 times as long as width at base; lateral margin distinctly concave in middle, posterior margin rounded. Subgenital plate short and narrowed posteriorly, about 0.9 times as long as width at base. Genitalia: epiphallus distinctly transverse, with long lateral lobes and short middle lobes; apex of the lateral lobes acute and distinctly bent dorsad; apex of the middle lobes obtuse rounded; ectophallus wide, distinctly shorter than lateral lobes of epiphallus.

FEMALE. Body slightly smaller than male. Head small and rounded, width of head subequal with pronotum. Scapus without process; eyes rather large, located on front of the side of head. Anterior and posterior margin of pronotum nearly subequal, about 1.4 times as long as wide. Tegmina reaching 9th abdominal tergite, with 7 parallel veins on dorsal surface. Ovipositor spear-shaped, about 0.6 times as long as the length of body.



Figs. 3–4. *Loxoblemmus montanus* sp. n., head from front. 3 – male, 4 – female.



Figs. 5–7. *Loxoblemmus montanus* sp. n., male genitalia. 5 – dorsal view, 6 – ventral view, 7 – lateral view

COLORATION. Body darkish brown, upper part of face blackish brown, lower part light brown; frontal rostrum with a small yellow spot on median ocellus, and with a narrow transverse yellow stripe between lateral ocelli; dorsal area of head with 6 short yellow longitudinal stripes (slightly longer in female). The color of legs brighter than the body; hind femur yellow, knees black.

MEASUREMENTS (mm). Male: body 12.7–14.4, pronotum 1.8–2.3, tegmina 4.6–5.0, hind femur 6.8–8.0; female: body 11.5, pronotum 1.4–1.5, tegmina 3.2–3.5, hind femur 8.5, ovipositor 6.7.

DIAGNOSIS. New species is similar to *Loxoblemmus spectabilis* Gorochov et Kostia, 1993 from Korea, but differs from the latter by the small body, by a small spot on median ocellus (Figs 3, 4), and by male frontal rostrum distinctly widened, with almost straight projection (Figs 1, 3). In *L. spectabilis*, the body large (male 18.0 mm, female 15.0–16.0 mm); head with a large spot on median ocellus; male frontal rostrum narrow, with rounded projection (Gorochov & Kostia, 1993).

VARIATION. We study the shape of the head of six male specimens, thick frontal rostrum, genae and genitalia are stable taxonomic characteristics, but veins of tegmina varies (sometimes tegmen with 4 oblique veins, or mirror with 1 dividing vein).

ETYMOLOGY. The specific name is derived from the Latin adjective *montanus*.

DISTRIBUTION. China (Sichuan).

#### ACKNOWLEDGEMENTS

This study was supported by the National Natural Science Foundation of China (No. 31201731, 31372232), the Natural Science Foundation of Hebei Province (No. C2014201043) and Ph. D. Programs Foundation of Ministry of Education of China (No. 20121301120007).

#### REFERENCES

- Eades, D.C., Otte, D., Cigliano, M.M. & Braun, H. 2016. *Orthoptera Species File Online*. Version 5.0/5.0. Available from: <http://Orthoptera.SpeciesFile.org>. (Accessed 10 April 2016)
- Gorochov, A.V. & Kostia, D. 1993. On some species of the genus *Loxoblemmus* Sauss. (Orthoptera: Gryllidae) from North Korea. *Acta Zoologica Cracoviensia*, 35(3): 427–433.
- Ichikawa, A., Ito, F., Kano, Y., Kawai, M., Tominaga, I. & Murai, T. 2006. *Orthoptera of the Japanese Archipelago in Color*. Hokkaido University Press, Sapporo. 687 p. [In Japanese].
- Kirby, W.F. 1906. *Orthoptera Saltatoria. Part I. (Achetidae et Phasgonuridae.)*, A Synonymic Catalogue of Orthoptera (Orthoptera Saltatoria, Locustidae vel Acridiidae). Vol. 2. British Museum (Natural History), London, 562 p.
- Liu, H.-Y. & Shi, F.-M. 2014. Grylloidea. P. 339–360. In: Yin, W.Y., Zhou W.B. & Shi, F.M. (Ed.), *Fauna of Tianmu Mountain Vol. III*. Zhejiang University press, Hangzhou. [In Chinese].
- Saussure, H. 1877. Mélanges orthoptérologiques. Fascule III. Gryllides [1re partie]. *Mémoires de la Société de Physique et d'Histoire Naturelle de Genève*, 25(1): 1–352.
- Storozhenko, S.Yu., Kim, T.W. & Jeon, M.J. 2015. *Monograph of Korean Orthoptera*. National Institute of Biological Resources, Incheon. 377 p.
- Yin, H.-S. & Liu, X.-W. 1995. *Synopsis on the classification of Grylloidea and Gryllo-talpoidea from China*. Shanghai Scientific and Technological Literature Publishing House, Shanghai, 237 p. [In Chinese with English summary].